



# Rejestrator Abaxo ABR-0404S ABR-0804S

instrukcja obsługi programu CMS wersja 1.0 EN

## CMS Manual

1. Introduction.....	1
2. Operating Environment.....	2
3. UI Funticons Description.....	2
4. Installation and Unloading.....	3
4.1 software installation.....	3
4.2 Uninstall.....	4
5. Settings.....	4
5.1 Device Management.....	4
5.1.1 Device Search List.....	5
5.1.2 Device Management.....	5
5.1.3 Add Device.....	5
5.1.4 Modify/Delete Device.....	6
5.1.5 Add/Delete/Modify Area.....	7
5.2. Device Settings.....	7
5.3 Local Setting.....	8
5.3.1 General Settings.....	8
5.3.2 Record Settings.....	9
5.3.3 Storage settings.....	10
5.4 Version Information.....	10
6. Preview.....	10
7. Playback ( Local/Remote ) .....	13
7.1 Function Introduction of Playback Interface.....	13
7.2 Local Playback.....	13
7.2.1 Retrieve Local Files.....	13
7.2.2 Local Playback.....	13
7.3. Remote Playback.....	14
7.3.1 Retrieve Remote files.....	14
7.3.2 Play the Remote Files.....	14
8. Backup.....	15
8.1 Retrieve Remote files.....	15
8.2 Backup Video File.....	15
FAQ.....	16

## CMS Manual

### 1. Introduction

CMS video monitoring client is Centralized managing IPC/DVR/NVR application software, which is a complete set with embedded network monitoring equipment.

**Features:**

- Support LAN & WAN network;
- Support networks ID and IP login;
- Support automatic connection device with the CMS startup;
- Support automatic searching & adding equipments and automatically assign IP;
- Support a key to add/empty all, manually add equipments;
- Support 1/4/6/8/9/16/25/36/49 standard segmentation image;
- Support segmentation mode of adaptive preview channels segmentation;
- Support 49 channels stream video preview at the same time;
- Support Main stream and secondary stream auto switch on IPC preview;
- Support DVR/NVR manually switches between primary and secondary stream;
- Support Time/Manual/Event video mode;
- Support PTZ Remote Control;
- Support real-time preview, local playback, remote playback;
- Support manual switch for the video adaptive window and original proportion;
- Support searching local /remote record by video category such as timing/manual/events;
- Support local /remote 4 channels synchronous playback;
- Support remote video backup;
- Support remote setting device parameters;
- Support multi-language user interface, Chinese, English, Russian, Turkish...

## 2. Operating Environment

**Operating system:** WinXP / WIN7 / WIN8

**Host Configuration :**

Minimum resolution : 1152 \* 864

Minimum RAM : 2g ( Recommend more than 4g )

Minimum requirements: CPU G530 @ 2.40GHz 2.39GHz

Video Disk : >4096M

## 3. UI Funticons Description

Table 1 UI Functions Description

Functions	Function <a href="#">Overview</a>
Preview	The added devices' real-time preview, code steam switch, PTZ controls, original video proportion, audio, manual record, etc...
Playback	Support playback local redord of IPC/NVR/DVR and remote video of DVR/NVR
Backup	Support download remote video of storage device such as NVR/DVR
Settings	Device Management: search/add/delete/modify devices, add/delete areas
	Device Settings: set the parameters of remote device, namely all settings will be synchronized to the device
	Local Settings: record settings, storage setting, language setting of CMS on computer

## 4. Installation and Unloading

### 4.1 software installation

①After unzip the files, double-click the CMS running exe, enter into the installation language option box, as shown in figure 1.

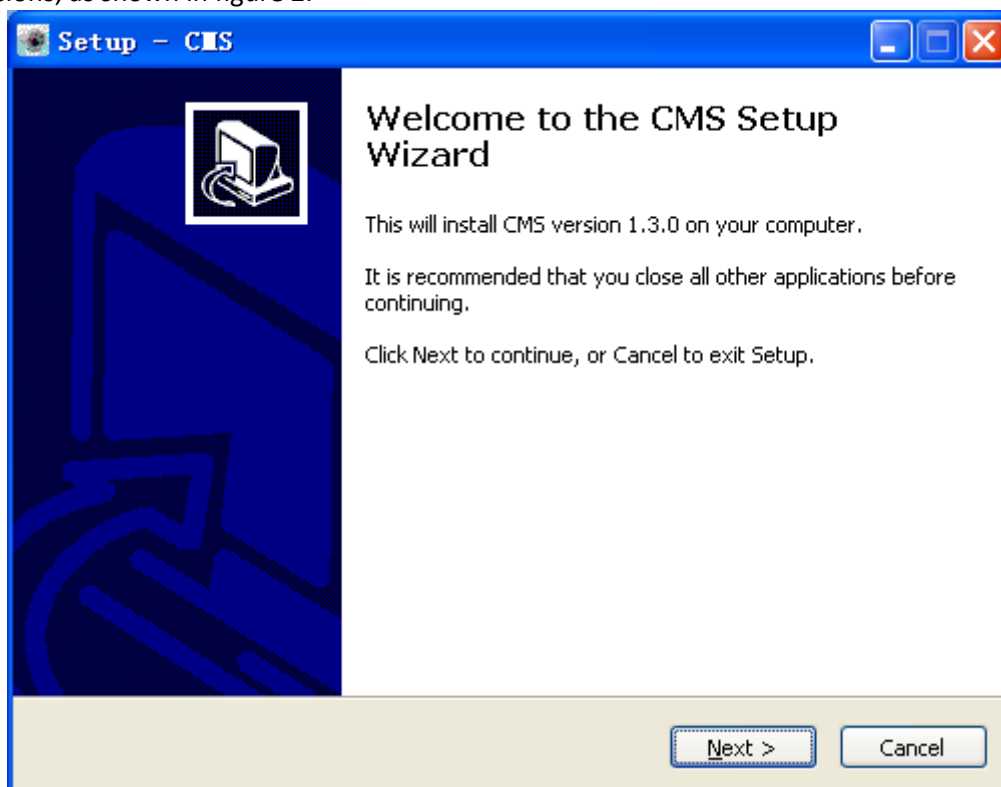
Figure 1 Setup Language



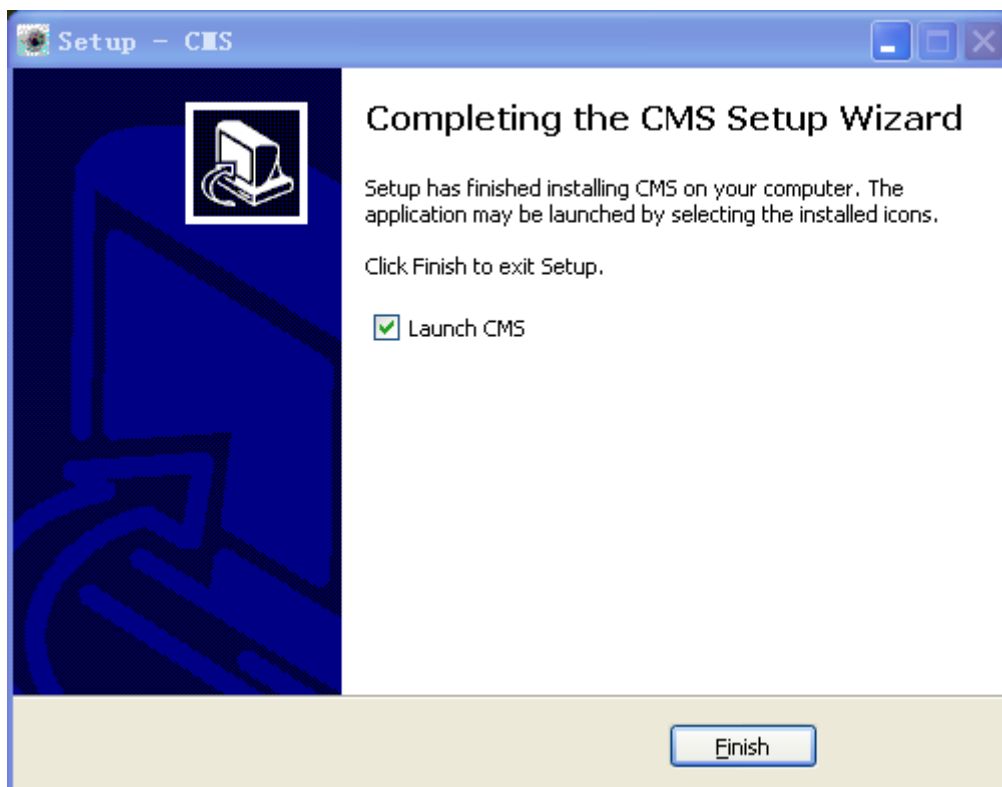
It Can be allowed to set the

software language when install, supporting Chinese, English, Russia and Turkish.

② click "Yes", enter into the the CMS installation wizard of corresponding language versions, as shown in figure 2.



③click "next", in the subsequent pop-up setup wizard, according to the actual needs to select the installation path and additional icon position, enter into the installation interface; prompted the installation is completed, click "finish" to end the installation, as shown in figure 3.



④ If it is needed to cancel the installation, please click "cancel" in the installation process, then enter into exiting the installation prompts site, as shown in figure 4.

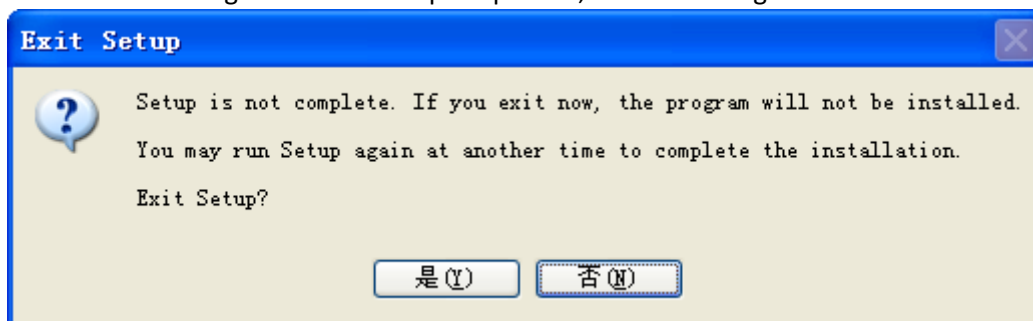


Figure4. Exit installation

Click "Yes" to exit the installation, or click "No" to return to the installation interface

## 4.2 Uninstall

Enter into the start menu - program – CMS, select to uninstall CMS

## 5. Settings

### 5.1 Device Management



Figure5. Device management UI diagrams

#### 5.1.1 Device Search List

- 1) Click figure5 navigation bar "Device", "IP", "Channel" to rank the devices respectively according to the device type, IP address, channel number
- 2) When there are lots of devices, users can use fuzzy search, in the text box of the following Figure 6, enter the partial or complete IP address /Esee ID, then directly press the return key to search for the related devices which will be arranged at the top of the devices list.



Figure6.

Fuzzy Search

- 3 ) Device network Settings (only effective for the IPC)

#### 5.1.2 Device Management

Table 2 Device Management

Function	Function Description
Add→	check the required devices in the "Device" bar, then click "add ->" to add devices to the right side of "regional" list
Quick setup	Add all of the devices in the "device" bar list to "Area"
Add area	Support add multiple sub areas, convenient for device area division
Add device	Manually add devices support IP address (LAN), Esee ID (WAN)
Modify device	Right click device in "Area", select "change/delete"

Clear devices	Empty all the devices in the “Area”
Flush	Refresh the current device list

### 5.1.3 Add Device

Method ① Check the required devices, click “Add→”to the “area” list in the right site; If the device has password, please type it in manually.

Method ② manually add device: Support IP/ID two connection ways. According to the current device parameter, please modify the channel number, type, user name, password, etc... The “username” included is the login account for device, “device name” will be shown in your CMS, two of which can be different, as shown in the figure7 below.

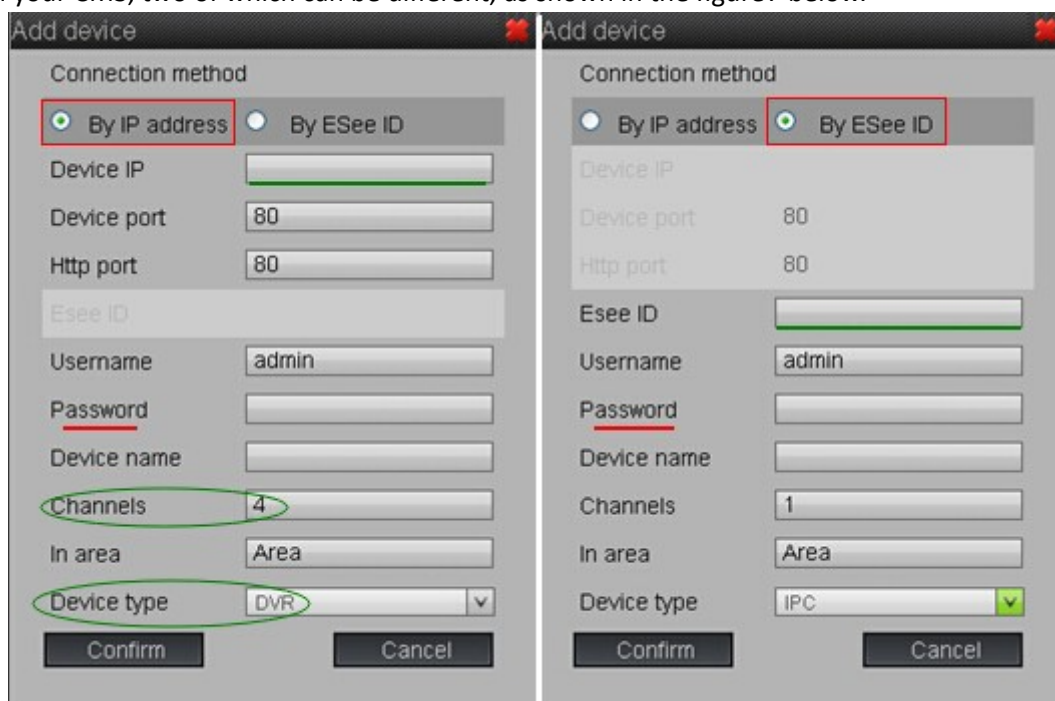


Figure7. Add Device

### 5.1.4 Modify/Delete Device

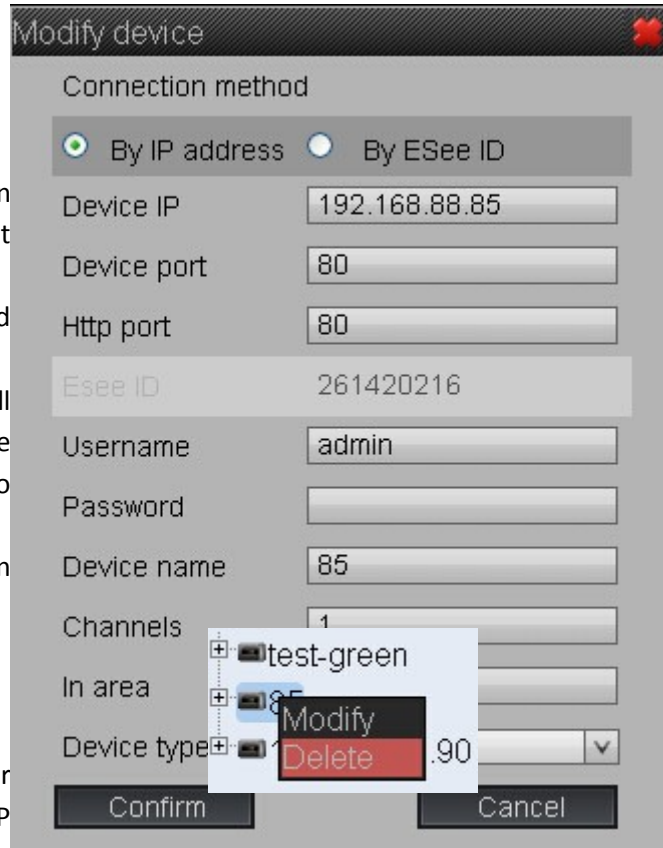
Method ① Click one device in the added devices list, click on the “ modify device” , it will popup prompt box as shown in the figure 8 below.



Figure8.  
Modify Device

Method ② in the device list right-click device and choose "modify", it will popup the prompt box to modify device as shown in figure 9

Figure9. Modify device  
Ps : After modifying the IP address, it



would turn to other devices, so please close the current Connection and reopen the preview.

Device port/HTTP port should keep consistent with device site , otherwise user would not be able to open the connection in the preview interface.

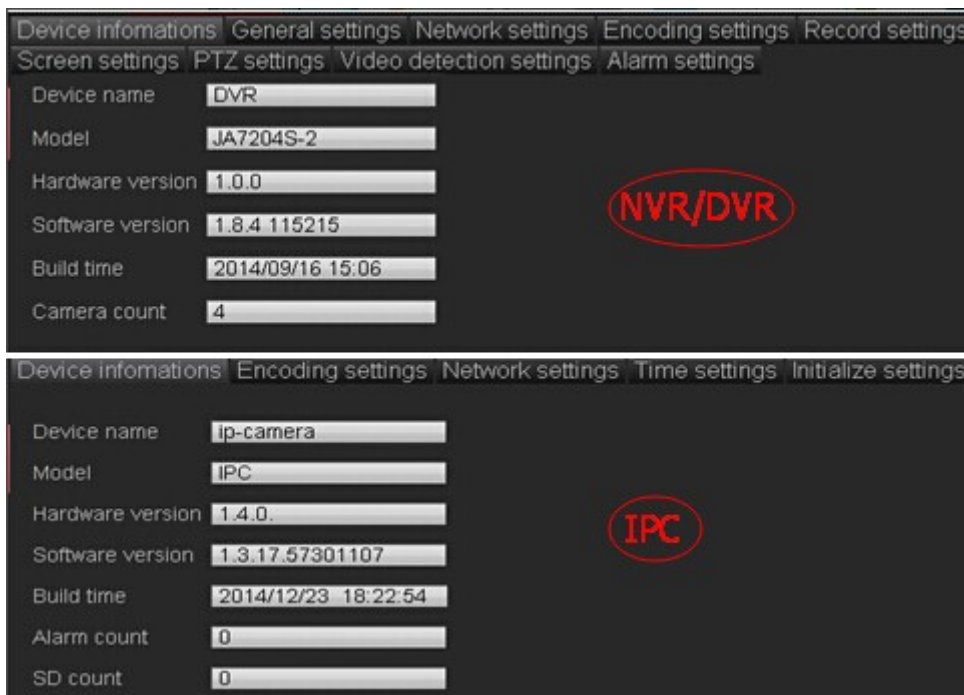
### 5.1.5 Add/Delete/Modify Area

- ◆Add areas: click the area at the up level, choose "add region", input area name, then click "yes";
- ◆Modify/delete area: right click area name; choose delete/modify;
- ◆"Area" is the default which cannot be modified or deleted

### 5.2. Device Settings

Remote settings, all the settings will take affection on the device site

- ◆ Click the device, it will display device information (if the password is not correct, the device information will be displayed to no author, user can right click on the device to modify, as shown in the below figures 10, which respectively are the IPC, DVR/NVR device information interfaces )



◆ Encoding Settings, network Settings, video Settings, etc., would be synchronous to the setting s site; Suggest modifying with reference of manual provided with the device. (Note: The "restore" in the initialization setting is used to restore the factory Settings, click which the system will automatically delete the current device, and the user will need to search and add again)

### 5.3 Local Setting

The Local video/storage Settings based on CMS

#### 5.3.1 General Settings

- ◆ All of the modification in general settings, after click "save", it will not take effective unless the CMS has been reboot
- ◆ Automatic connect the device: It will connect all the added devices when start the CMS each time.
- ◆ Automatic full screen: it would be automatically full-screen when open CMS each time, right-click menu back key to the main interface to exit full screen
- ◆ Language setting: Language can be set during installation and it need to restart CMS after setting, as shown in the figure 11 below

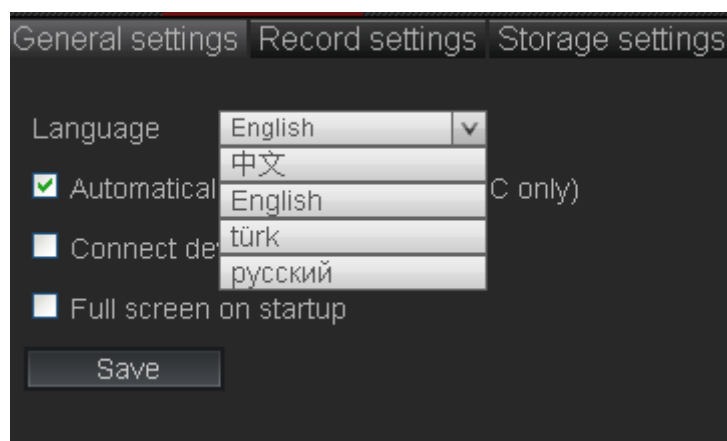


Figure 11 General setting

### 5.3.2 Record Settings

Table3. Local record setting & UI Function Description

Function	function Overview
Start-End Time	Default 0-24 point , can be modified into different period
Timing Record	Timing is the default record way and it would take affection for all the connecting devices without modification
Motion Record	This mode only be effective for IP-Camera, and the IP-Camera support motion detection; Select the channel under IPC, check “motion” and corresponding week/everyday, take effective immediately after click “Save”
Copy to	To save the current channel setting to all device, effective immediately; After setting a channel, select and check “all” in the drop-down menu; Click “copy to”, and it has been saved successfully when the button color from green turn to grey.

If it is needed to cancel the timing record, which is, the CMS would not automatically record after open CMS. Cancel the checked item under the type of "timing" mode, and after click “save” the channel will no longer record and will still not automatically record after the next CMS open. User could click on the “Start record” of the channel’ window right-click menu in preview interface

Record Settings UI diagram as shown in the figure 12,

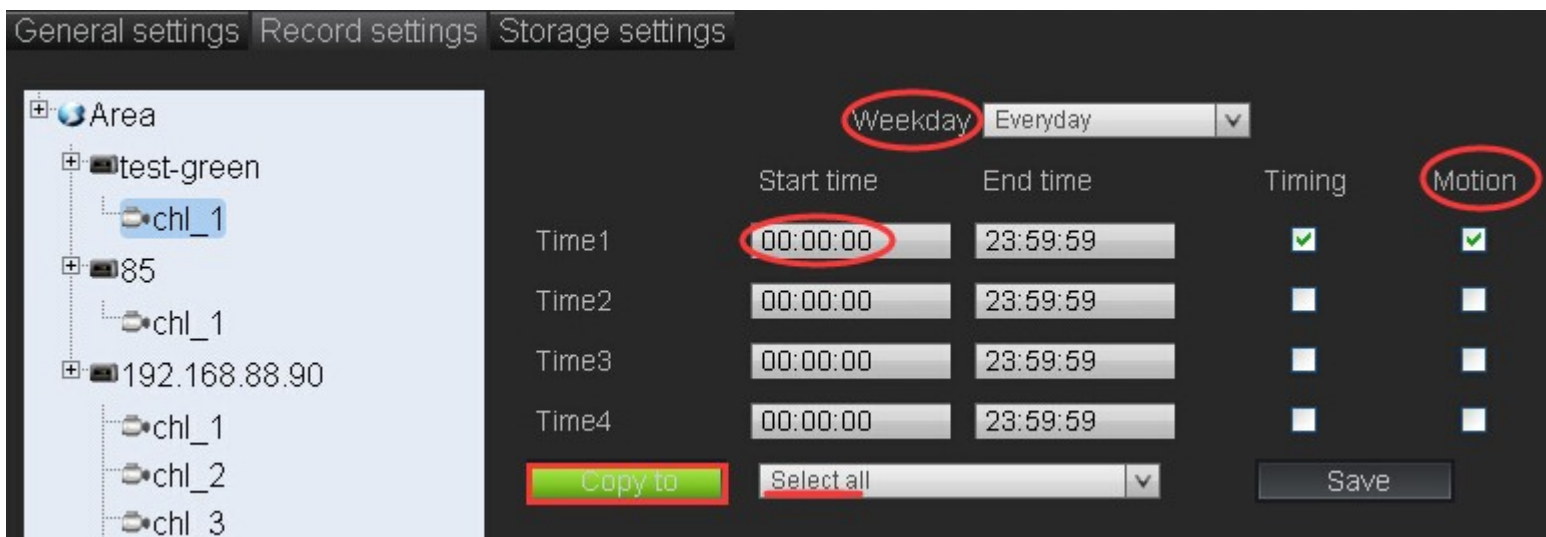


Figure12 Record Setting

### 5.3.3 Storage settings

Local file saved by reference default path: D:\recEX

◆ Loop Record: Check this item, it will turn to cover record mode when the disk is full of video;

If not check, it will stop recording when the disk is expiration, so it is suggested to reserve enough disk space and check the “loop record” item.

◆ Disk headspace: When the disk space left reaches the reserved value, it will cover record or does not record. The storage setting interface is shown as below figure13,

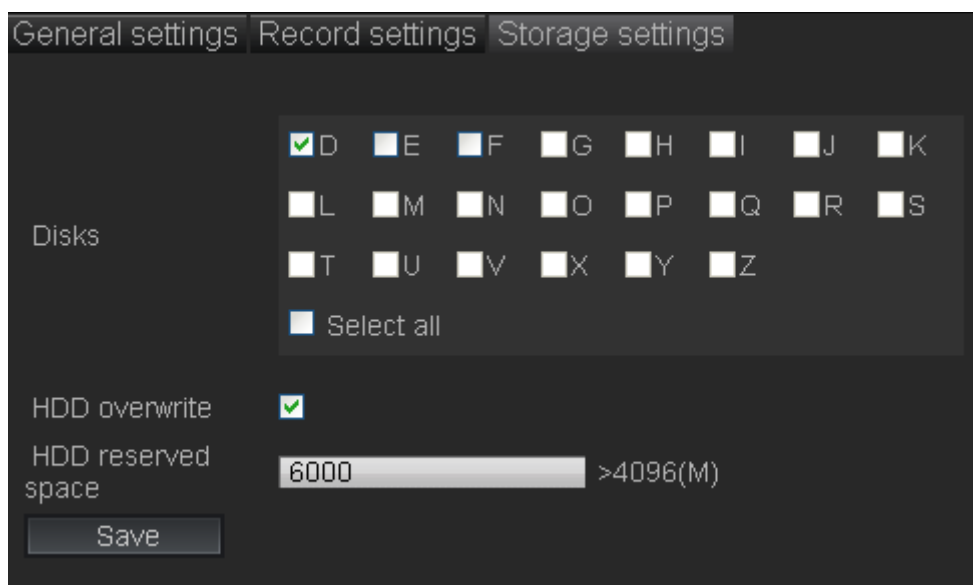


Figure 13 Storage settings

## 5.4 Version Information

Version information displays the current CMS version number & Build date

## 6. Preview

The added devices' real-time preview, code stream switch, PTZ controls, original video proportion, audio, manual record, etc...

### ◆ Device list

#### 1 ) Open the preview

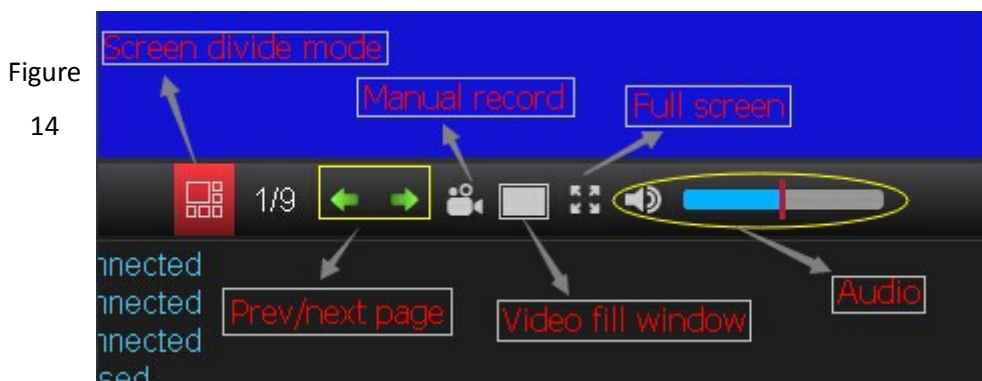
- ① Double click one channel, it will connect the channel via the selected window. If the window has been occupied and it will turn to the next available window to open preview; the window can be specified;
- ② Double-click the device name; open all channels under the device in sequence;
- ③ Open all: Open all devices' preview in sequence starting from the first window.

#### 2 ) Close Preview

- ① Double-click the connected channels/device name, close the channel/device preview;
- ② Right click the "close preview" in the menu to close current window's preview. ;
- ③ Close all : Close all real-time previews

#### 3 ) Right click the channel name under the DVR/NVR , switch code stream

### ◆ Toolbar functions, as shown in the figure as below,



Split screen mode : Support various screen split modes; click "open all" and the split screen mode would be selected automatically according to the channel number.

Manual record : open/close all Windows' manual record , priority level is lower than the motion record, higher than regular video

Video original scale : Switch the original resolution and window proportion of all the windows.

Full screen: open in full screen

Full screen : Open full screen

Audio button: it will turn to blue color after open , slide to adjust volume ; The mouse focus in "x " window, then the audio is output from this window ;

◆ **Right button shortcut menu** as the follows table ,

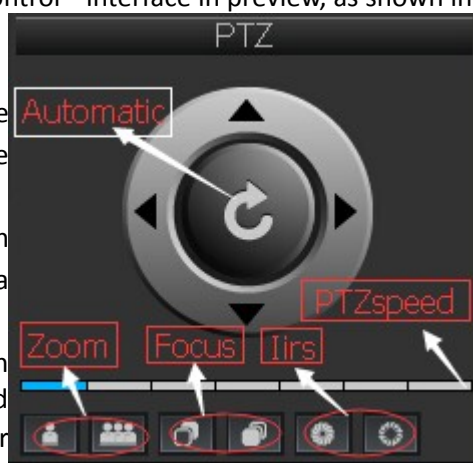
Table 4 Right button shortcut menu

Right button shortcut menu	Function Description
Cancel preview	Cancel the real-time preview of current window
Main/sub code stream	Only effective for DVR/NVR ; IPC small window for sub code stream , double-click to enlarge for main code stream
Start/stop recording	Control current window manual recording, priority : timing < manual < motion
Video	Video original resolution switch with window size
Back to main interface	Exit full screen and back to preview main interface

◆ **PTZ Control**

IP Camera or dome analog camera ( N1/ ONVIF Protocol ) connected with PTZ , can be controlled via the " PTZ control " interface in preview, as shown in the figure below,

Figure 15. PTZ Control  
 Auto : Click on the automatic button , the IPC would circularly rotate in accordance with a predetermined trajectory.  
 Direction : 4 direction keys, up, down, left and right, , suitable for manually adjust the camera Angle.



Speed control : Adjust the camera rotation speed

## 7. Playback ( Local/Remote )

### 7.1 Function Introduction of Playback Interface

Table 5 Playback interface UI Introduction

Playback	Function Description
UI	Support 4ch synchronous playback; respectively search by types; multi-rates fast switch; Audio synchronization;
Local Playback	Playback recorded via CMS to computer; support single type search playback (manual, timing, motion)
Remote Playback	Storage devices remote playback ; Support Esee ID connection

### 7.2 Local Playback

#### 7.2.1 Retrieve Local Files

Double click on the right site device list or click on the "search", the default search includes all the video files of all devices on the day;

- ◆ Support "Records type" and dates respectively retrieval;
- ◆ Files retrieved would be shown in the bottom progress bar

#### 7.2.2 Local Playback

**Play** : According to the window location of device channel, check the window, click the progress bar

- ◆ Function on Toolbar

Audio : the audio button turns to blue color after open; slide to adjust volume;

The audio out from the window where the mouse focus locates;

Slow/Speed playing: multiple speed playback would consume more resources; when the play/pause button is speeding, click the button to restore back into normal speed for playing.

- ◆ Local playback interface as shown in the figure below,

## MONITOR CLIENT



Figure 16 Local playbacks UI Function diagram

### 7.3. Remote Playback

#### 7.3.1 Retrieve Remote files

Click the storage type devices→ Start to search or double click on the device; it is default to search the remote files on that day.

- ◆ User can search the remote files by “files type” , which is consistent with the parameter in the device record plan ;

#### 7.3.2 Play the Remote Files

Check the required channels , click the time for playback on the progress ;

- ◆ If there is parameter error prompt , the current device is not for storage like IPC ;

- ◆ If it reminds finishing search but there is no files shown :

Please check it that if it is the error password (device manage→ modify device) ;

Please check it that if there is any records at the device site or during the period ;



- ◆ If there is a prompt of connection error, please confirm that if the device is online.

## 8. Backup

Main Function : Support remote download the device files in the storage type ( e.g. DVR/NVR ) ;

Backup interface UI as shown in the below figure,

The screenshot shows the 'MONITOR CLIENT' interface with the 'Backup' tab selected. The interface includes a navigation bar with 'Preview', 'Playback', 'Backup', and 'Settings' tabs. Below the navigation bar is a table with columns: Device name, Channel, Record type, Start Time, and End time. The table contains 24 rows of backup records, each with a checkbox on the left. The records are organized into two groups: one with Channel 4 and one with Channel 3. Each group contains two 'Timing' records followed by ten 'Manual' records. The 'Start Time' and 'End time' columns show specific timestamps for each record.

	Device name	Channel	Record type	Start Time	End time
<input type="checkbox"/>	192.168.88.90	4	Timing	2014-12-25 16:18:19	2014-12-25 16:59:59
<input type="checkbox"/>	192.168.88.90	4	Timing	2014-12-25 15:49:25	2014-12-25 16:16:51
<input type="checkbox"/>	192.168.88.90	4	Manual	2014-12-25 00:00:00	2014-12-25 00:59:59
<input type="checkbox"/>	192.168.88.90	4	Manual	2014-12-25 01:00:00	2014-12-25 01:59:59
<input type="checkbox"/>	192.168.88.90	4	Manual	2014-12-25 02:00:00	2014-12-25 02:59:59
<input type="checkbox"/>	192.168.88.90	4	Manual	2014-12-25 03:00:00	2014-12-25 03:59:59
<input type="checkbox"/>	192.168.88.90	4	Manual	2014-12-25 04:00:00	2014-12-25 04:59:59
<input type="checkbox"/>	192.168.88.90	4	Manual	2014-12-25 05:00:00	2014-12-25 05:59:59
<input type="checkbox"/>	192.168.88.90	4	Manual	2014-12-25 06:00:00	2014-12-25 06:59:59
<input type="checkbox"/>	192.168.88.90	4	Manual	2014-12-25 07:00:00	2014-12-25 07:59:59
<input type="checkbox"/>	192.168.88.90	4	Manual	2014-12-25 08:00:00	2014-12-25 08:59:59
<input type="checkbox"/>	192.168.88.90	4	Manual	2014-12-25 09:00:00	2014-12-25 09:59:59
<input type="checkbox"/>	192.168.88.90	4	Manual	2014-12-25 10:00:00	2014-12-25 10:59:59
<input type="checkbox"/>	192.168.88.90	4	Manual	2014-12-25 11:00:00	2014-12-25 11:59:59
<input type="checkbox"/>	192.168.88.90	4	Manual	2014-12-25 12:00:00	2014-12-25 12:59:59
<input type="checkbox"/>	192.168.88.90	4	Manual	2014-12-25 13:00:00	2014-12-25 13:59:59
<input type="checkbox"/>	192.168.88.90	4	Manual	2014-12-25 14:00:00	2014-12-25 14:59:59
<input type="checkbox"/>	192.168.88.90	3	Timing	2014-12-25 16:18:19	2014-12-25 16:59:59
<input type="checkbox"/>	192.168.88.90	3	Timing	2014-12-25 15:49:25	2014-12-25 16:16:51
<input type="checkbox"/>	192.168.88.90	3	Manual	2014-12-25 00:00:00	2014-12-25 00:59:59
<input type="checkbox"/>	192.168.88.90	3	Manual	2014-12-25 01:00:00	2014-12-25 01:59:59
<input type="checkbox"/>	192.168.88.90	3	Manual	2014-12-25 02:00:00	2014-12-25 02:59:59
<input type="checkbox"/>	192.168.88.90	3	Manual	2014-12-25 03:00:00	2014-12-25 03:59:59
<input type="checkbox"/>	192.168.88.90	3	Manual	2014-12-25 04:00:00	2014-12-25 04:59:59
<input type="checkbox"/>	192.168.88.90	3	Manual	2014-12-25 05:00:00	2014-12-25 05:59:59

Figure 17 Backup UI diagram

### 8.1 Retrieve Remote files

Click device→ search or double click device; default is searching the current day files ;

Support respectively retrieves according to the files type and date.

### 8.2 Backup Video File

1 ) **Start backup:** check the required backup files , click “start backup”, choose the files in the popups and click “yes”; the progress bar behind the current backup files would provide

corresponding prompt;

**2 ) Cancel backup** : if it is needed to cancel the backup, please click “stop backup”.

◆ Please click “ channel”, “record type”, “start time”, “End time”in the upper navigation bar of the left file list area to reranking.

## FAQ

### 1. Audio :

◆ There is audio only when the IPC double-click enlarged displays by main code stream (User need to open the audio at the device site)

◆ NVR need switch to main code stream mode before there is any audio..

### 2. Remote playback/backup

◆ If it prompt parameter error, the current device is not a storage device like IPC;

◆ If prompt retrieval completeness but there is no files shown:

Please check whether the current password was inputted correctly (device manage→modify device)

Please check the device is recording normally;

Please check whether there is video at the device site during the date (e.g. the former video has been covered)

◆ if the connection is failed, please check whether the device is online.