

# Smart Phone Viewer<sup>+</sup>Android User's Manual

- H.264 Stand-Alone DVR
- Superior Video Quality
- S-ATA Hard Disc Drive

Support Models - All HDxSeries DVR except HDF1212

Design and specifications are  
subject to change without notice.



P/N : 3810-0246A (Ver.1012E)

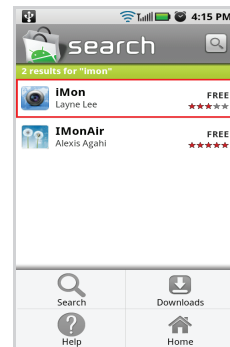


## CONTENTS

1. iMon Installation through Android Market .....	3
2. Register DVR Site to iMon .....	4
3. Remote Site Connection .....	6
4. Event Information .....	7
5. Alarm On/Off .....	8
6. Remote Setup .....	9

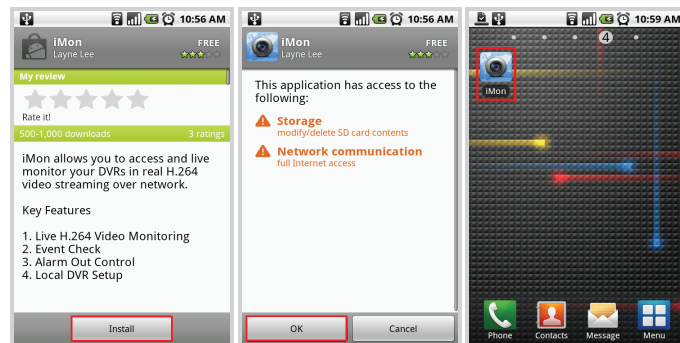
## 1. iMon Installation through Android Market

- 1 Please select Android Market  icon at Android phone's menu.
- 2 Please select Search button  at the menu bar, and then search iMon on the Market



- App Name : iMon
- Search iMon on the Market and Select from the list.

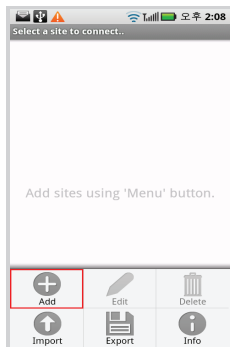
- 3 Please select Install button  and OK button , then iMon program will be installed to your Android Phone like below.



## 2. Register DVR Site to iMon

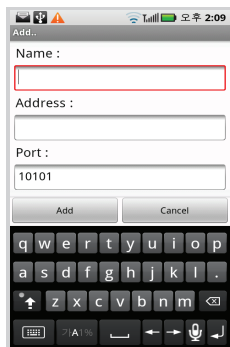
1 Please select iMon icon  to run the program.

2 Please select Add button like below picture.



► Click + to add a site

3 Please input DVR's connection information

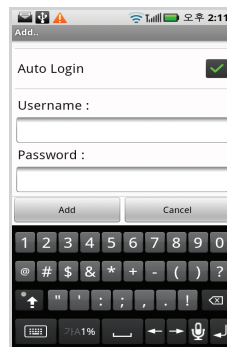


► Name : Site Name

► Address : DVR Address (IP or DDNS address)

► Port : Network Live Port set on DVR  
Default Port: 10101  
(Do not input RTSP Port)

4 Auto Login function enables users to access DVR without login process.

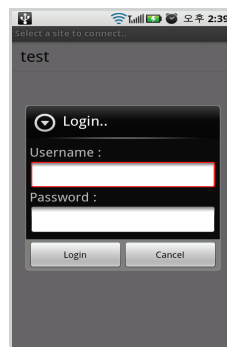


► Auto Login : On/Off

► User Name : ID set for DVR

► Password : Password set for DVR  
Default ID: admin  
Default Password: 1111

5 User should go through Login process whenever user accesses to DVR if Auto Login function is disabled.

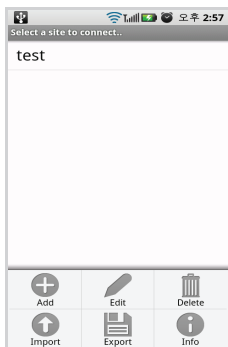


► User Name : ID set for DVR

► Password : Password set for DVR  
Default ID : admin  
Default Password : 1111

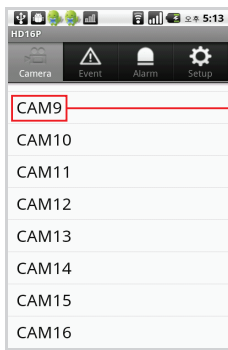
### 3. Remote Site Connection

- 1 Please select a DVR site from the registered Site List



► Select a site to connect

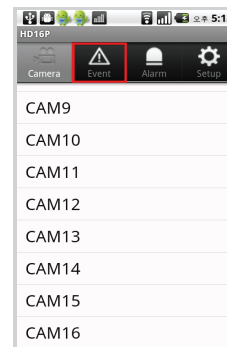
- 2 If you are connected to DVR successfully, DVR's camera list will be displayed. You can check live video if you select a camera from the list.



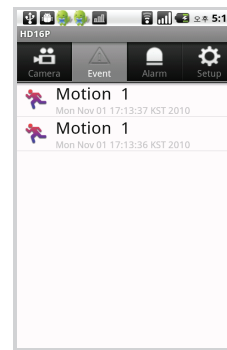
► If a camera is not connected to DVR, the camera title will be displayed in red.

### 4. Event Information

- 1 Please select Event menu from the menu bar to check event information.



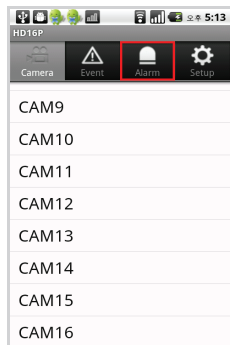
- 2 User can check occurred event's type and time from event list



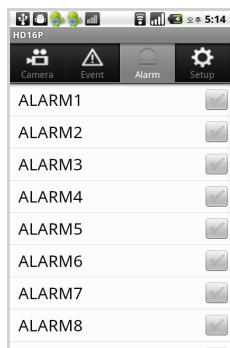
- Display logs up to 100
- When the number of logs exceeds 100, the oldest log data will be overwritten to the latest log.

## 5. Alarm On/Off

- 1 Please select Alarm menu from the menu bar to control DVR's alarms manually.



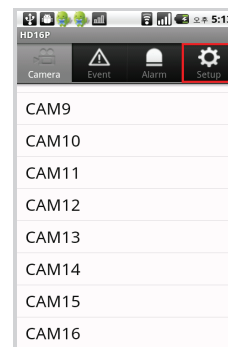
- 2 DVR's local alarms can be turned on / off remotely.



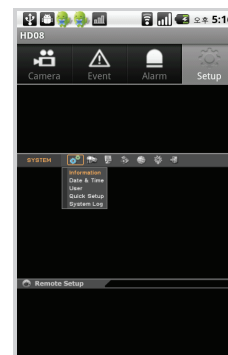
► On / Off DVR's local alarms

## 6. Remote Setup

- 1 Please select Setup menu from the menu bar to configure DVR remotely.



- 2 Please select Setup menu from the menu bar to configure DVR remotely.



► Provide the same user interface for DVR configuration as local DVR.