

Smart Phone Viewer⁺iPhone User's Manual

- H.264 Stand-Alone DVR
- Superior Video Quality
- S-ATA Hard Disc Drive

Support Models - All HDxSeries DVR except HDF1212

Design and specifications are
subject to change without notice.

P/N : 3810-0247A (Ver.1012E)

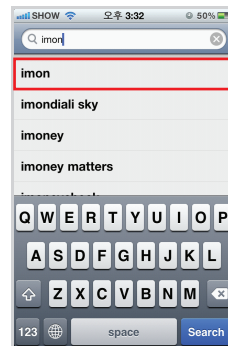


CONTENTS

1. iMon Installation through the App Store	3
2. Register DVR Site to iMon	4
3. Remote Site Connection	6
4. Event Information	7
5. Alarm On/Off	8
6. Remote Setup	9

1. iMon Installation through the App Store

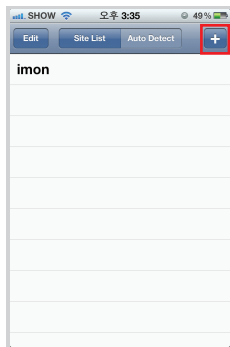
- 1 Please select App Store icon at iPhone's menu.
- 2 Please select Search button at the menu bar, and then search iMon on App store.
 - ▶ App Name : iMon
 - ▶ Search iMon on the App store and select from the list.
- 3 Please select Free button **FREE** and Install button **INSTALL** in a row, then iMon program will be installed to your iPhone like below pictures.



2. Register DVR Site to iMon

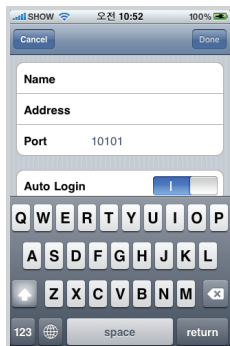
1 Please select iMon icon  to run the program.

2 Please select Add button like below picture.



► Click + to add a site

3 Please input DVR's connection information

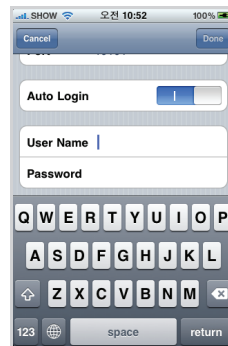


► Name : Site Name

► Address : DVR Address (IP or DDNS address)

► Port : Network Live Port set on DVR
Default Port: 10101
(Do not input **Mobile Port**)

4 Auto Login function enables users to access DVR without login process.

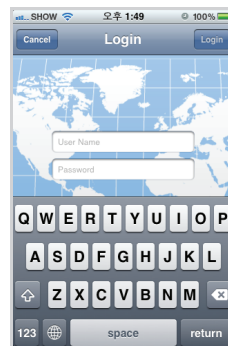


► Auto Login : On/Off

► User Name : ID set for DVR

► Password : Password set for DVR
Default ID : admin
Default Password : 1111

5 User should go through Login process whenever user accesses to DVR if Auto Login function is disabled.

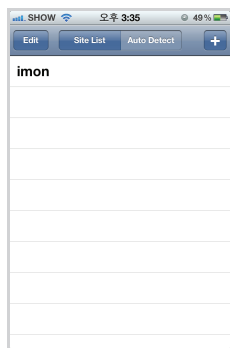


► User Name : ID set for DVR

► Password : Password set for DVR
Default ID : admin
Default Password : 1111

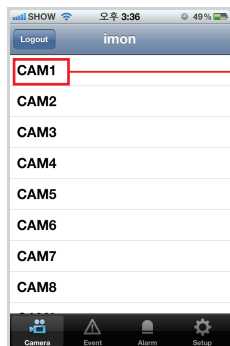
3. Remote Site Connection


- 1 Please select a DVR site from the registered Site List



▶ Select a site to connect

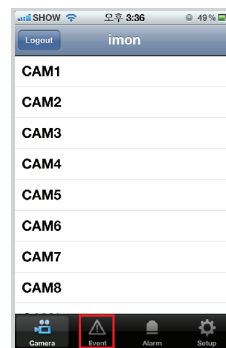
- 2 If you are connected to DVR successfully, DVR's camera list will be displayed. You can check live video if you select a camera from the list.



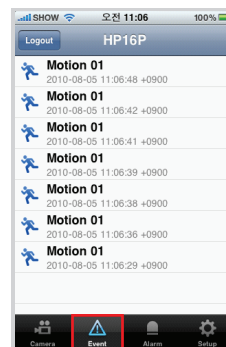
- ▶ If a camera is not connected to DVR, the camera title will be displayed in red.
- ▶ Pause  is only usable function from the Apple Media menu.

4. Event Information

- 1 Please select Event menu from the menu bar to check event information.



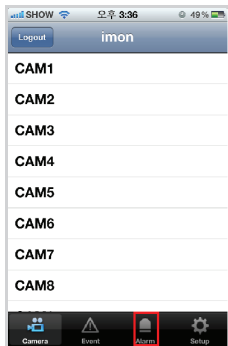
- 2 User can check occurred event's type and time from event list



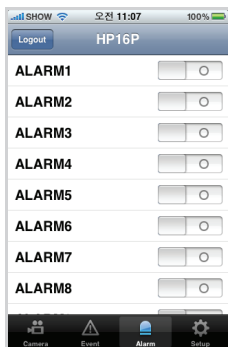
- ▶ Display logs up to 100
- ▶ When the number of logs exceeds 100, the oldest log data will be overwritten to the latest log.

5. Alarm On/Off

- 1 Please select Alarm menu from the menu bar to control DVR's alarms manually.



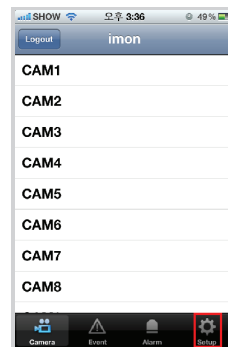
- 2 DVR's local alarms can be turned on / off remotely.



► On / Off DVR's local alarms

6. Remote Setup

- 1 Please select Setup menu from the menu bar to configure DVR remotely.



- 2 Remote setup provides the same configuration method as local DVR.



► Provide the same user interface for DVR configuration as local DVR.