

HSVR-04MT HSVR-08MT HSVR-16MT

HSVR - H.265+ MULTI PLATFORM



KEY FEATURES

Video Input and Transmission

- Self-adaptive HDTV/HDCVI/AHD/CVBS signal input
- Up to 2-ch 4 MP IP cameras input for 8/16 channel versions
- Long distance transmission over UTP and coaxial cable:
max. 800m for 1080p and 1200m for 720p HD TVI signal

Compression and Recording

- H.265+/H.265/H.264+/H.264 encoding for the main stream, and H.265/H.264 for the sub-stream of analog cameras
- Connectable to H.265+/H.265/H.264+/H.264 IP cameras
- H.265+ can be enabled to improve encoding efficiency and reduce data storage costs
- Full channel recording at up to 4 MP lite resolution
- Supports real-time 1080p lite and when enabled, the image effect is similar with 1080p

Video Output

- Simultaneous HDMI/VGA output
- HDMI output at up to 4K (3840 x 2160) resolution for 16 channel version

Storage and Playback

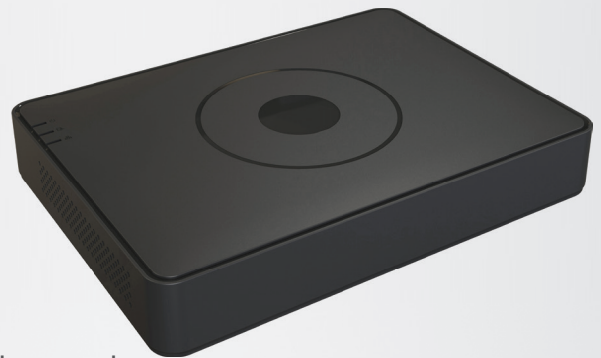
- One SATA interface (up to 6 TB capacity per HDD)
- 4/8/16-ch synchronous playback
- Smart search for efficient playback
- Supports third-party cloud storage (Dropbox/Google Drive/Microsoft OneDrive)

Smart Function

- VQD (Video Quality Diagnostics)
- Supports PTZ control via Omnicast VMS of Genetec protocol

Network & Ethernet Access

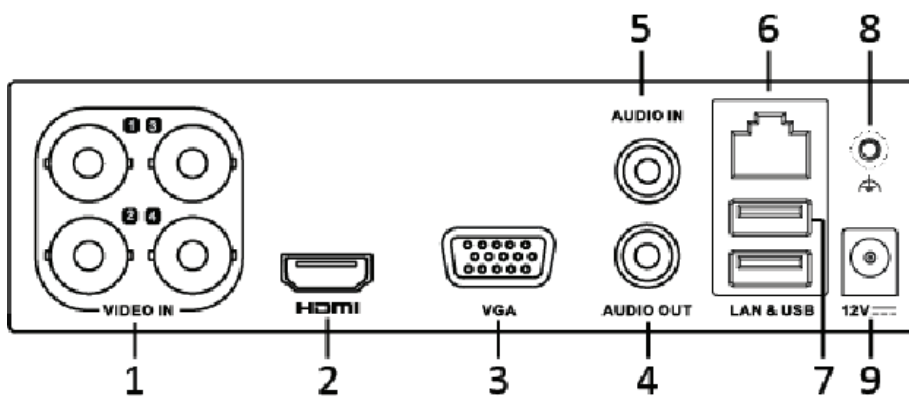
- Guarding Vision & MAZi DDNS (Dynamic Domain Name System) for easy network management
- One RJ45 10M/100M Ethernet network interface for 4/8 channel versions, and one 10M/100M/1000M Ethernet network interface for 16 channel version
- Output bandwidth limit configurable



SPECIFICATION	HSVR-04MT	HSVR-08MT	HSVR-16MT
Video compression	H.265+/H.265/H.264+/H.264		
Analog video input	4-ch	8-ch	16-ch
	BNC interface (1.0Vp-p, 75 Ω), supporting coaxitron connection		
Supported HD TVI input	4MP LITE, 3MP, 1080p25, 1080p30, 720p25, 720p30, 720p50, 720p60 Note: The 3MP signal input is only available for the first channel of 4CH, the first two channels of the 8CH and the first four channels of the 16CH recorders		
Supported AHD input	4 MP, 1080p25, 1080p30, 720p25, 720p30		
HD CVI input	1080p25, 1080p30, 720p25, 720p30		
CVBS input	Support		
IP video input	1-ch	2-ch	2-ch
	Up to 4 MP resolution, Supports H.265+/H.265/H.264+/H.264 IP cameras		
Audio compression	G.711u		
Audio input/Two-way audio input	1-ch, RCA (2.0 Vp-p, 1 KΩ)		
Video/Audio output			
HDMI/VGA output	1-ch, 1920 × 1080/60Hz, 1280 × 1024/60Hz, 1280 × 720/60Hz, 1024 × 768/60Hz	HDMI: 1-ch, 4K (3840 × 2160)/30Hz, 2K (2560 × 1440)/60Hz, 1920 × 1080/60Hz, 1280 × 1024/60Hz, 1280 × 720/60Hz, 1024 × 768/60Hz VGA: 1-ch, 1920 × 1080/60Hz, 1280 × 1024/60Hz, 1280 × 720/60Hz, 1024 × 768/60Hz	
Encoding resolution	When 1080p Lite mode not enabled: 4 MP lite/3 MP/1080p/720p/WD1/4CIF/VGA/CIF; When 1080p Lite mode enabled: 4 MP lite/3 MP/1080p lite/720p lite/WD1/4CIF/VGA/CIF		
Frame rate	Main stream: When 1080p Lite mode not enabled: For 4 MP stream access: 4 MP lite@15fps; 1080p lite/720p/WD1/4CIF/VGA/CIF@25fps For 3 MP stream access: 3 MP/1080p/720p/VGA/WD1/4CIF/CIF@15fps For 1080p stream access: 1080p/720p@15fps; VGA/WD1/4CIF/CIF@25fps For 720p stream access: 720p/VGA/WD1/4CIF/CIF@25fps When 1080p Lite mode enabled: 4 MP lite/3 MP@15fps; 1080p lite/720p lite/VGA/WD1/4CIF/CIF@25fps Sub-stream: WD1/4CIF@12fps; CIF@25fps		
Video bit rate	32 Kbps to 6 Mbps		
Audio output	1-ch, RCA (Linear, 1KΩ)		
Audio bitrate	64 Kbps		
Dual-stream	Support		
Stream type	Video, Video & Audio		
Synchronous playback	4-ch	8-ch	16-ch

SPECIFICATION	HSVR-04MT	HSVR-08MT	HSVR-16MT
Network management			
Remote connections	32	64	128
Network protocols	TCP/IP, PPPoE, DHCP, HIK Cloud P2P, DNS, DDNS, NTP, SADP, SMTP, NFS, iSCSI, UPnP™, HTTPS, ONVIF		
Hard disk			
SATA	1 SATA interface		
Capacity	Up to 6 TB capacity for each disk		
External interface			
Network interface	1, RJ45 10M/100M self-adaptive Ethernet interface		1, RJ45 10M/100M/1000M self-adaptive Ethernet interface
USB interface	Real panel: 2 × USB 2.0		
General			
Power supply	12 VDC		
Consumption (without HDD)	≤ 8W	≤ 12W	≤ 15W
Working temperature	-10 °C to +55 °C		
Working humidity	10% to 90%		
Dimensions(W × D × H)	200 × 200 × 45mm		285 × 210 × 45mm
Weight(without hard disks)	≤ 1 kg		

Rear Panel of HSVR-04MT



- 1 VIDEO IN
- 2 HDMI Interface
- 3 VGA Interface
- 4 AUDIO OUT, RCA Connector
- 5 AUDIO IN, RCA Connector
- 6 LAN Network Interface
- 7 USB Ports
- 8 GND
- 9 12VDC Power Input