

IDH-23MR

NETWORK DOME IR

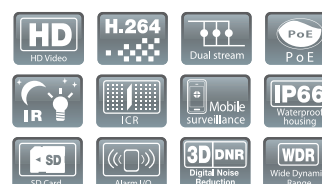


KEY FEATURES

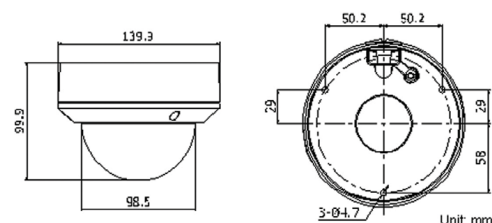
- 2MP high resolution
- HD real-time video
- IR LEDs: up to 30m
- DWDR & 3D DNR & BLC
- Onboard storage (up to 128GB)
- IP67
- Vandal-proof



SPECIFICATION	IDH-23MR
Camera	
Image Sensor	1/2.7" Progressive Scan CMOS
Min. Illumination	0.01Lux @ (F1.2, AGC ON), 0 Lux with IR
Shutter Speed	1/3 s Lo 1/10,000 s
Lens	2.7-12mm @ F1.4, horizontal field of view: 113° to 33.8°
Lens Mount	φ14
Adjustment Range	Pan:0° - 355°, Tilt: 0° - 75°, Rotation: 0° - 355°
Day & Night	IR cut filter with auto switch
DNR	3D DNR
Wide Dynamic Range	Digital WDR
Compression Standard	
Video Compression	H.264/MJPEG
Video Bit Rate	32 Kbps - 16 Mbps
Dual Stream	Yes
Image	
Max. Resolution	1920 * 1080
Frame Rate	25fps (1920 × 1080, 1280 × 960, 1280 × 720)
Image Settings	Saturation, brightness, contrast adjustable through client software or web browser
Backlight compensation	Yes, zone optional
Network	
Network Storage	Built-in Micro SD/SDHC/SDXC slot, up to 128G, NAS(NFS, SMB/CIFS)
Alarm Trigger	Tampering alarm, Network disconnect, IP address conflict, Storage exception
Protocols	TCP/IP, HTTP, DHCP, DNS, DDNS, RTP, RTSP, PPPoE, SMTP, NTP, UPnP, ICMP, IGMP, SNMP, FTP, 802.1X, QoS, HTTPS (SIP, SRTP, IPv6 optional)
Security	Flash-prevention, dual stream, heartbeat, mirror, password protection, privacy mask, watermark, IP address filtering, Anonymous access
Standard	ONVIF, PSIA, CGI, ISAPI
Interface	
Communication Interface	1 RJ45 10M/100M Ethernet interface
On-board storage	Built-in Micro SD card slot, up to 32 GB
General	
Operating Conditions	-30 °C - 60 °C Humidity 95% or less (non-condensing)
Power Supply	12 V DC ± 10% / PoE (802.3af)
Power Consumption	Max. 5.5 W
Impact Protection	IK10
Ingress Protection level	IP66
IR Range	Approx. 30 meters
Dimensions	Φ139.3 × 99.9 mm
Weight	800g



DIMENSIONS (mm)



Unit: mm